

# FLOCCLOUD GAS MONITORING

Ask your local branch or sales contact for more information or to set up a consultation with one of our dedicated Keen gas specialists!

Track your gas consumption per outlet point

Track pressure at the gas source and at multiple points throughout your gas system



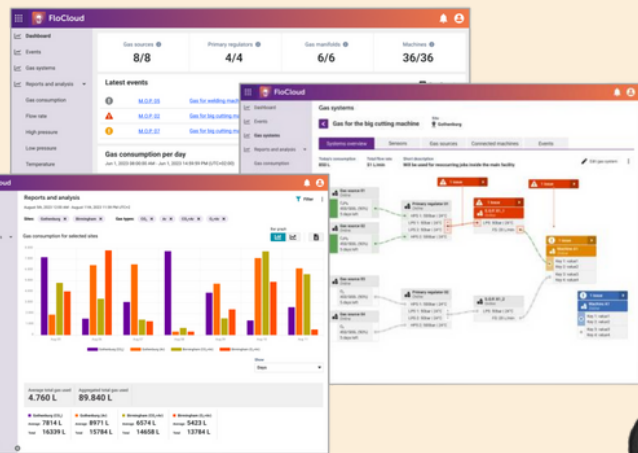
Get notifications for potential leakages or other key situations



Build your own digital version of your gas systems

Utilize the powerful InduSuite report functionality

Set and track flow-rate limits



WILMINGTON, DE  
4063 NEW CASTLE AVE  
302.594.4545

SALISBURY, MD  
1801-05 NORTHWOOD DR  
410.219.5888

CONCORDVILLE, PA  
1760 WILMINGTON PIKE  
610.459.3525

MILLVILLE, NJ  
601 ORANGE ST  
856.327.3077

ELKTON, MD  
339 CURTIS AVE  
410.392.4554

OXFORD, PA  
338 SOUTH ST  
610.998.0200

DOVER, DE  
226 SOUTH NEW ST  
302.736.6814

BALTIMORE, MD  
8301 PULASKI HWY  
443.772.9955

BRISTOL, PA  
6409 MACPHERSON AVE  
610.583.8770

DOWNINGTON, PA  
251 NORWOOD RD  
484.593.4461

MICKLETON, NJ  
223 DEMOCRAT RD  
856.599.1744

NEW HOLLAND, PA  
580 EAST MAIN ST  
717.354.6837

NEW TRIPOLI, PA  
7609 RT. 309  
610.298.8475

RENTALS & REPAIRS  
4063 NEW CASTLE AVE  
302.594.4555

KEENGAS.COM  
f i n



Spring 2025 SALE

Powermax45 SYNC

#088560

\$2,900



Powermax65 SYNC

#083343

\$4100



**HYPERTHERM®**

A Hypertherm Associates Brand

Powermax85 SYNC

#087183

\$5,400



Powermax105 SYNC

#059625

\$7,000



Powermax30 AIR

#088096

\$2,390

\$250 rebate on  
Powermax30 AIR &  
Powermax30 XP!



Powermax30 XP

#088079

\$1,970



**NEW** **metabo**

2000 Watt **BRUSHLESS** Angle Grinder

- 3x longer life than brushed grinders
- Easy cable/cord replacement
- Safe, efficient and long lasting



6" 600645420 **\$314.99**  
 4 1/2" / 5" 600643420 **\$309.99**

**NEW** Renegade VOLT™ ES 200i  
 Cordless, Battery-Powered Welder  
**Sale \$4112.76** 0447800880

- 200 A output on AC mains (230V)
- Up to 140 A output on battery power
- Includes (4) DeWALT FLEXVOLT 20V/60V 12Ah batteries
- AMP+ hybrid mode for extra power
- Durable, impact resistant housing
- Lightweight & Portable



**NEW** **Miller**

LPR-100 Gen.II Series  
 Half Mask Respirator

Reg \$40.69  
**Sale \$34.50**  
 S/M 294961  
 M/L 294962



8-1/4" Metal Cutting  
 Circular Saw  
 S210CCS  
 includes blade  
 integrated chip collection  
**\$289**



14" Mitering  
 Chop Saw S355MCS  
 includes blade  
**\$849**



7-1/4" Metal  
 Cutting Chop Saw  
 includes blade  
 EVOSAW185HD  
**\$220**



7-1/4" Metal Cutting  
 Circular Saw  
 includes blade  
 S185CCSL **\$165**



14" Chop Saw  
 includes blade  
 S355CPSL  
**\$379**

Mitering Chop Saw Stand  
 with Powerlift Assist  
 \*Compatible with S355MCS  
 133-0001 **\$249**



Universal  
 Chop Saw  
 Table\*  
 EVOCS2  
**\$169**  
 \*Not compatible  
 with S355MCS

12oz AR/FR Cotton Pullover Hooded Sweatshirt  
 JF1340-GY

MD, LG, XL Reg \$90.00  
**Sale \$57.00**  
 2XL Reg \$94.50  
**Sale \$59.00**  
 3XL Reg \$99.00  
**Sale \$62.00**  
 4XL Reg \$103.50  
**Sale \$65.00**



NFPA 2112 Compliant / UL certified / ASTM F1506  
 NFPA 70E Compliant / ATPV 26 cal/cm<sup>2</sup> (PPE CAT 3)  
 Tested to retain protection through 100 washes



Harris Model 25GX Regulators  
 Reg \$173.36  
**SALE \$94**

Model No.	Description	CGA	Gas Service
3000681	25GX-145-540 Clamshelled	540	Oxygen
3000683	25GX-15-300 Clamshelled	300	Acetylene

Dual Hose Spring Rewind Hose  
 Reel with "T" Grade Hose  
 Reg \$684  
**Sale \$549**  
 SHWT-N-150

- 1/4" I.D.
- 50' Hose
- 200PSI



**NEW** **Miller**

**ClearLight 4x Lens Technology** offers up to four times the clarity  
 compared to welding helmets with 1/1/1/1 as per official USA ANSI  
 certification of lens visibility.

Miller Digital Infinity Helmet Black  
 Reg \$508.78  
**SALE \$379**  
 Miller Digital Infinity Design Series  
 Reg \$561.91  
**SALE \$418**



Miller Digital Elite Helmet Black  
 Reg \$429.61  
**SALE \$320**  
 Miller Digital Elite Design Series  
 Reg \$482.76  
**SALE \$359**



Digital Elite Eligible for  
 \$75 MFG Rebate  
 Scan QR Code  
 for details



Reg \$2450  
**SALE \$2205**

**NEW** 0202101  
 HMD2X2 Low Profile  
 Two Speed Magnetic Drill  
 The perfect drill for general metal fabrication  
 and drilling holes in confined spaces.  
 29.2lbs 2" Depth 7/16" - 2" Diameter

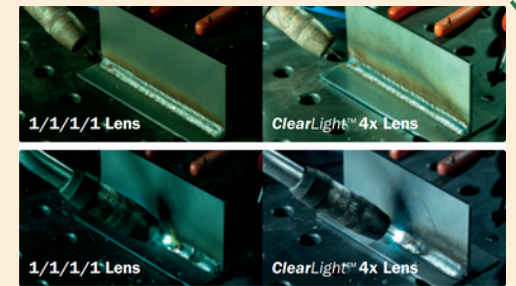


Reg \$1,375  
**SALE \$1,237**

0130101  
 HMD130 Ultra Low Profile  
 Magnetic Drill  
 Ultra Low Profile lightweight  
 right angle drill with large capacity.  
 23.8lb 1" Depth 7/16" - 1-3/8" Diameter

0904101  
 HMD904 Magnetic Drill  
 30lb 2" Depth 7/16" - 1-1/2" Diameter  
 Reg \$1,150  
**SALE \$1,035**

0904103  
 HMD904S Magnetic Drill  
 with Swivel Base  
 33lb 2" Depth 7/16" - 1-1/2" Diameter  
 Reg \$1,350  
**SALE \$1,215**



Miller Performance Helmet Black  
 Reg \$351.52  
**SALE \$259**  
 Miller Performane Design Series  
 Reg \$387.75  
**SALE \$288**

